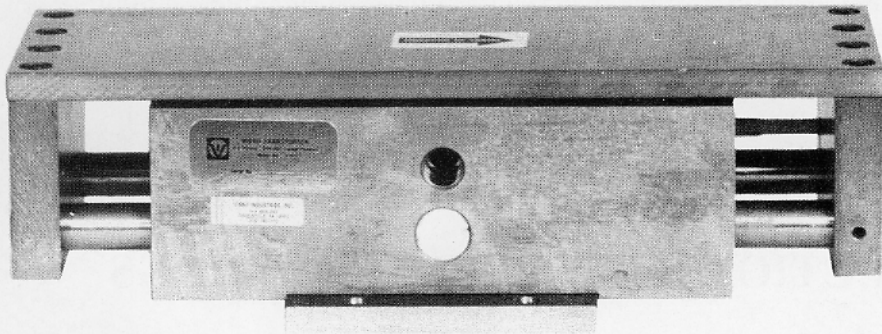


**INSTRUCTIONS**  
for the  
**Installation & Operations**  
of the Model 850 & Model 250

**VIBRO TRANSPORTER<sup>®</sup>**

---



---

Made in the U.S.A.

U.S. Patent No. 4593603  
Patents Pending in Europe

## **WARNING**

**Do not operate without air filter or oiler.**

# **INSTRUCTIONS**

Remove carriage top plate and use as template to drill and counterbore four outer holes in tray. Replace carriage top plate using short screws in the center holes. Mount tray with four longer screws in outer holes. Care should be taken when drilling holes. Misalignment can cause distortion resulting in loss of power and shuttle.

Short trays transporting light material can be used without support. Long trays and when transporting heavy material trays must be supported at both ends.

(Caution) Do not turn regulating rod in so far that unit will bang at end of stroke. Adjust air pressure to suit load. For best performance use trays made from hot rolled steel.

## **INSTRUCTIONS TO REPLACE O-RINGS**

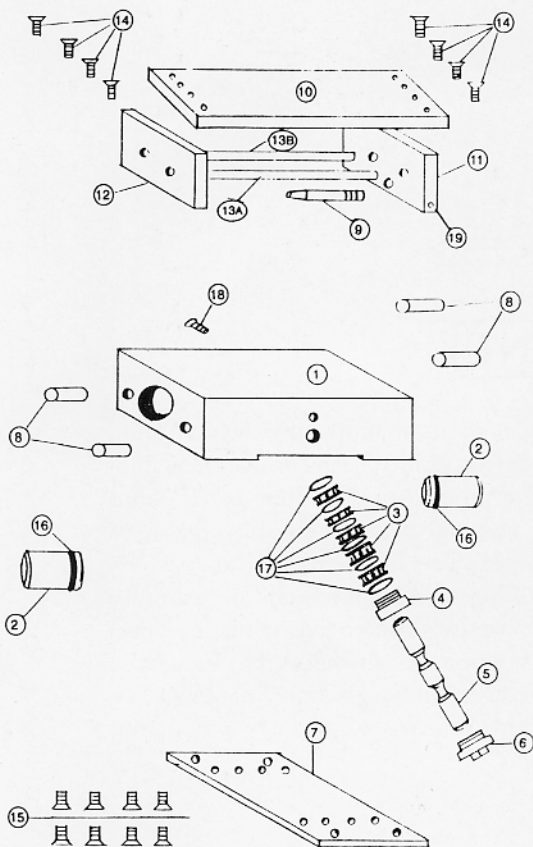
To disassemble Transporter, to replace o-rings: Remove set screws #19 holding carriage rail A to endplate #11. Pull out carriage rail A, now endplate #11 can be removed. Piston #2 can be removed to replace o-rings.

To remove valve #5 and valve o-rings: Remove muffler cap #6 and screw in 12-24 TAP in center of valve, pull out valve. To remove valve o-rings, screw out packing nut #4 carefully removing 6 o-rings and 5 spacers.

To reassemble valve assembly start by dropping in one o-ring, then one spacer on top of o-ring and so on, until all are in place. Tighten packing nut so valve #5 can move in and out without binding. OIL valve lightly.

Replace carriage rail B with endplate #11 first, then slide valve in to bottom out on carriage rail B. Now carriage rail A can be slid by valve. Tighten set screws in their respective holes in carriage rail, assemble endplate, top plate and muffler.

**Lack of oil will cause unit to run slow.**



Part	Model #250		Model #850	
	Order No.	Qu.	Order No.	Qu.
1. Housing				
2. Piston	250-2	2	850-2	2
3. Valve Ring	250-3	5	850-3	5
4. Valve Nut	250-4	1	850-4	1
5. Valve Rod	250-5	1	850-5	1
6. Muffler Assembly			850-6	1
7. Foot	250-7	1	850-7	1
8. Bearing	250-8	4	850-8	4
9. Regulating Rod	250-9	1	850-9	1
10. Carriage Top Plate	250-10	1	850-10	1
11. Carriage End Plate (Fixed)	250-11	1	850-11	1
12. Carriage End Plate (Free)	250-12	1	850-12	1
13a. Carriage Rail	250-13a	1	850-13a	1
13b. Carriage Rail	250-13b	1	850-13b	1
14. Flatsocket capscREW mm 5-16 7/16 - 14 x 11/2	250-14	8	850-14	8
15. Flatsocket capscREW mm 5-12 7/16 - 14 x 11/4	250-15	8	850-15	8
16. O-ring 19.2 x 3.0 mm mm 77.4	250-16	2	850-16	2
17. O-ring 5.28 x 1.78 mm mm 16 x 4.5	250-17	6	850-17	6
18. Flatsocket capscREW 1/4 - 28 x 1/2			850-18	1
19. Socket Set Screw 5/16 5/8	250-19	1	850-19	1

Specifications	Model #850	Model #250
Air Pressure Range	35 - 60	35 - 80
Air Consumption (CFM)	40 psi - 6.7	0.7
Feed Rate (feet per minute)	15 - 40	12 - 35
Sound Level (db-A)	68	60
Maximum Load (lbs)	500	25
Maximum Weight of Tray (lbs)	100	3
Weight of Transporter (lbs)	50	2



## WARRANTY

Vibro Industries Inc., guarantees any product of its manufacture, which upon examination by Vibro Industries proved to be defective in material or workmanship, will repair or replace free of charge defective product or part there of. If Vibro Industries inspection discloses no defect in material or workmanship, repair or replacement will be made at customary charges. The foregoing warranty, voids and is in lieu of all or any other warranties, express or implied, and no warranty of merchantability or fitness for particular purpose is intended or made. Vibro Industries sole obligation is as stated above and in no event shall Vibro Industries be liable for any special, direct, indirect, consequential or other damages, or expense or any nature including, without limitation loss of profit or production time.



**VIBRO INDUSTRIES, INC.**

P.O. Box 209 Port Royal, PA 17082

**(717) 527-2094**